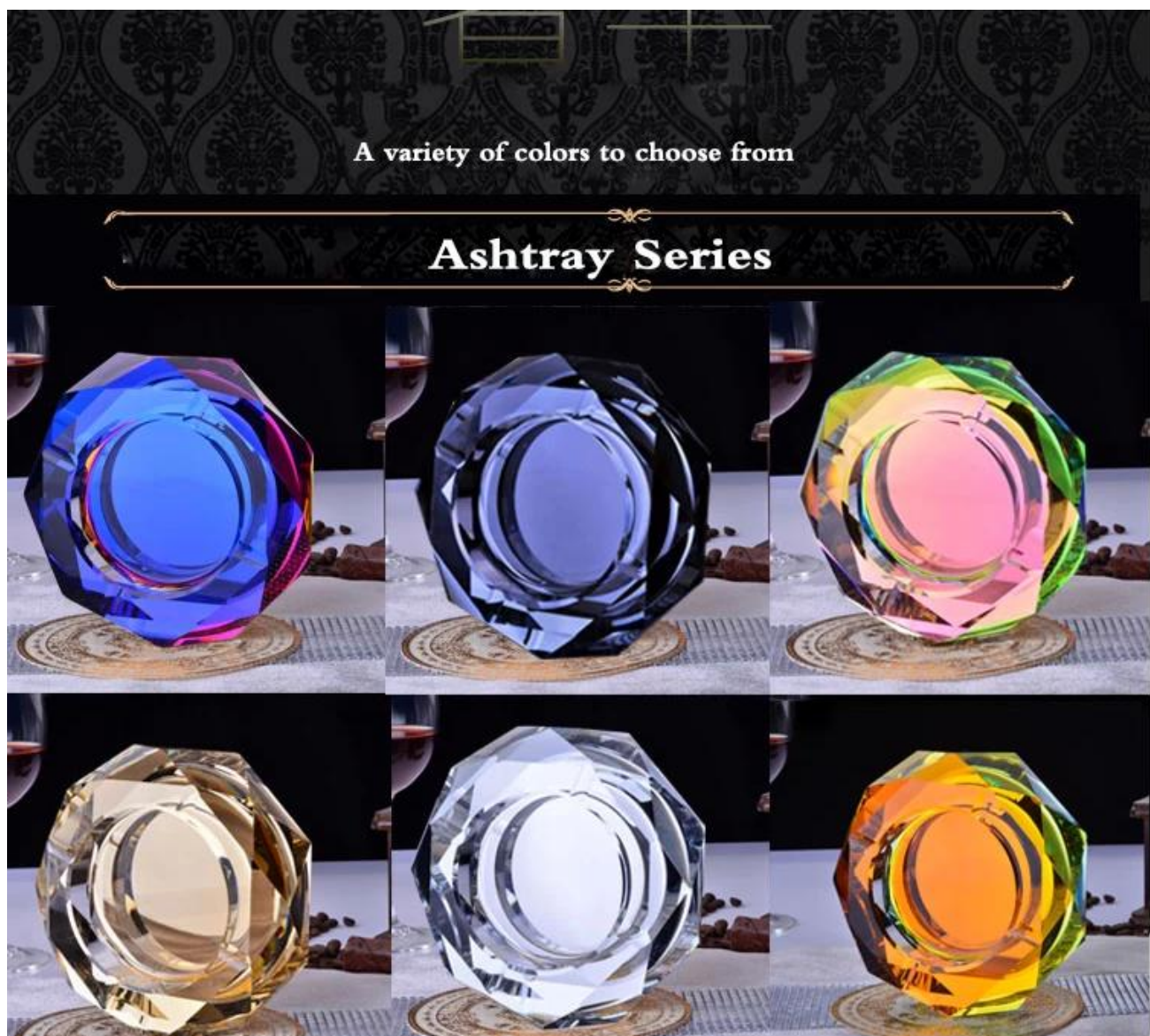


Popular antique ashtray personalized glass ashtrays commercial ashtray supplier



What are the features of personalized glass ashtrays?



What are the functions of personalized glass ashtrays?

- 1) Machine blasted /pressed, elegant pattern, widely use in restaurant/hotel/home/party etc.
- 2) Special design and accurate quality control make sure every piece offered is as perfect as possible.
- 3) Logo customized, pattern, size and color etc. could be done according to your drawings. - Decal, Carving, electro plating, sand blasting, paint spraying, etc.
- 4) Packaging : PVC box, Windows box, color box, shrinkage wrap are available to make sure it can be sold directly. Standard export packing assure safety shipment.
- 5) Timely delivery, 12000 square meter self-owned warehouse holding large stock to enable our supply.
- 6) Eco-Friendly, pass FDA, CA65, LFGB standard test.

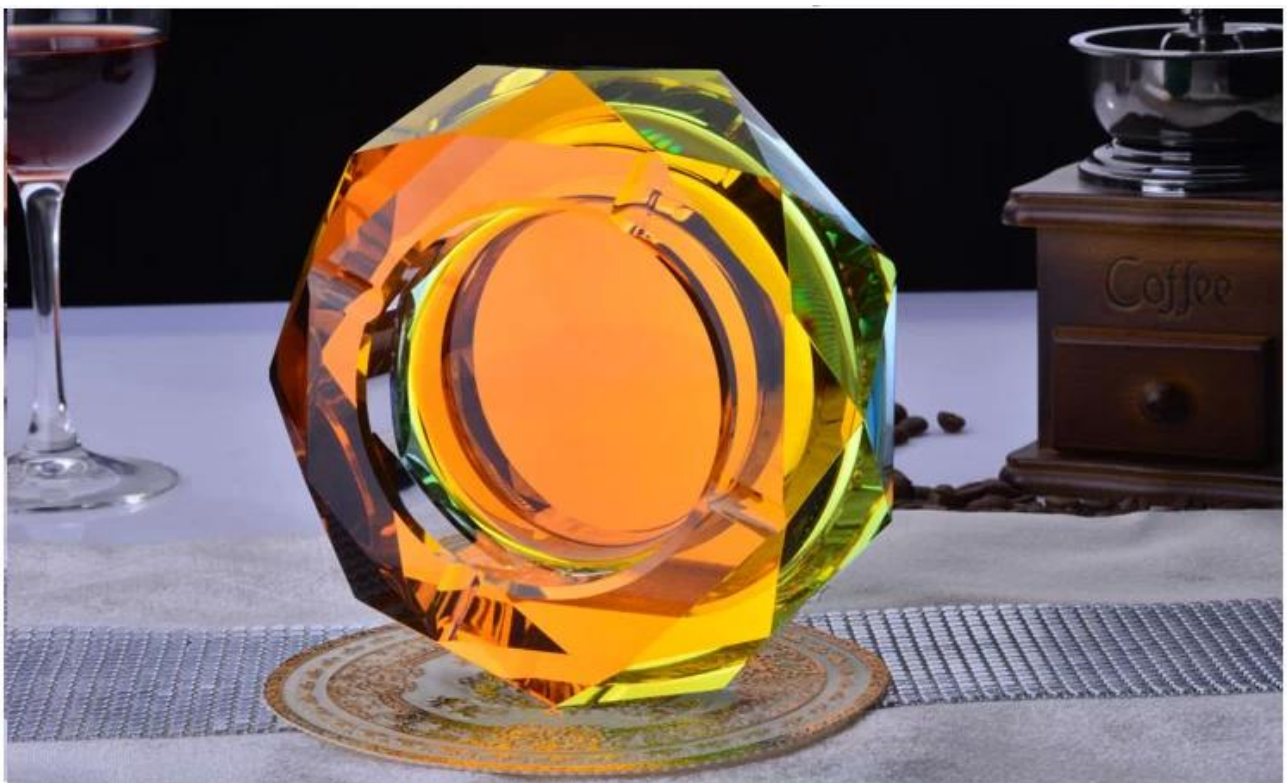
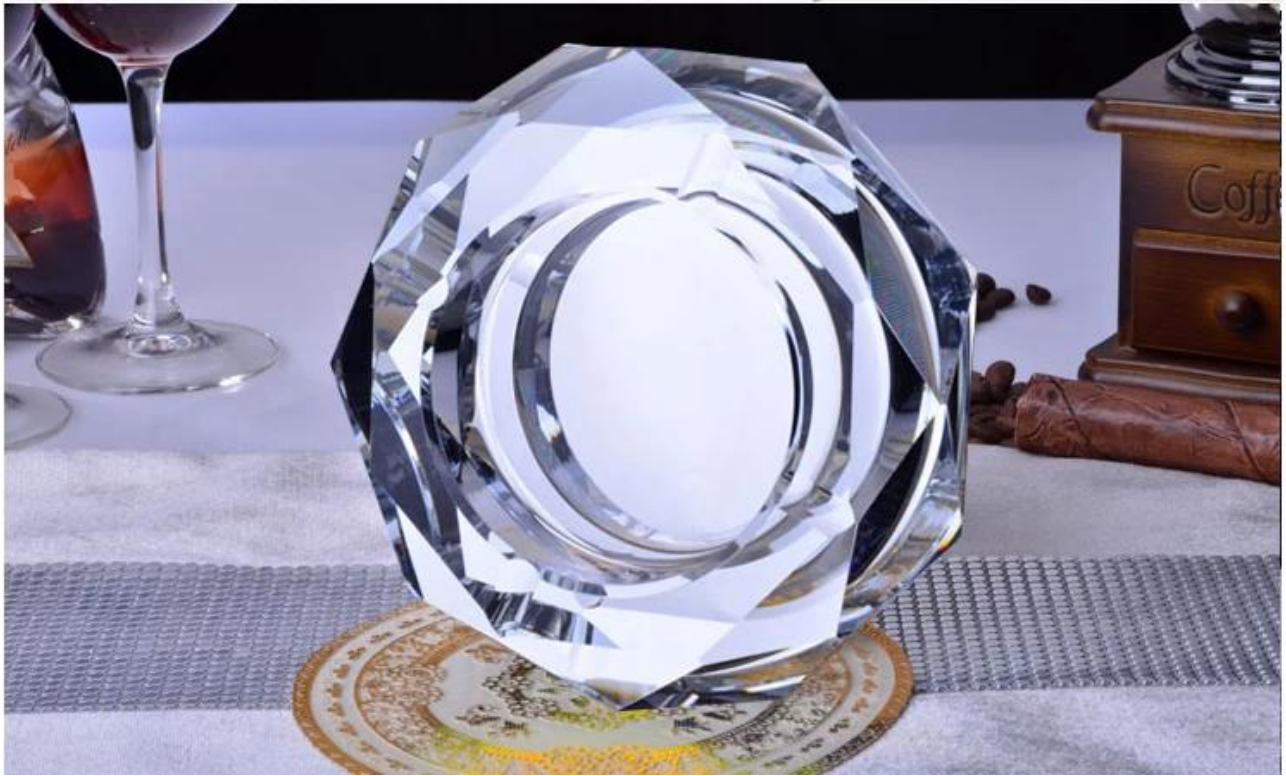
What are the specifications of personalized glass ashtrays?

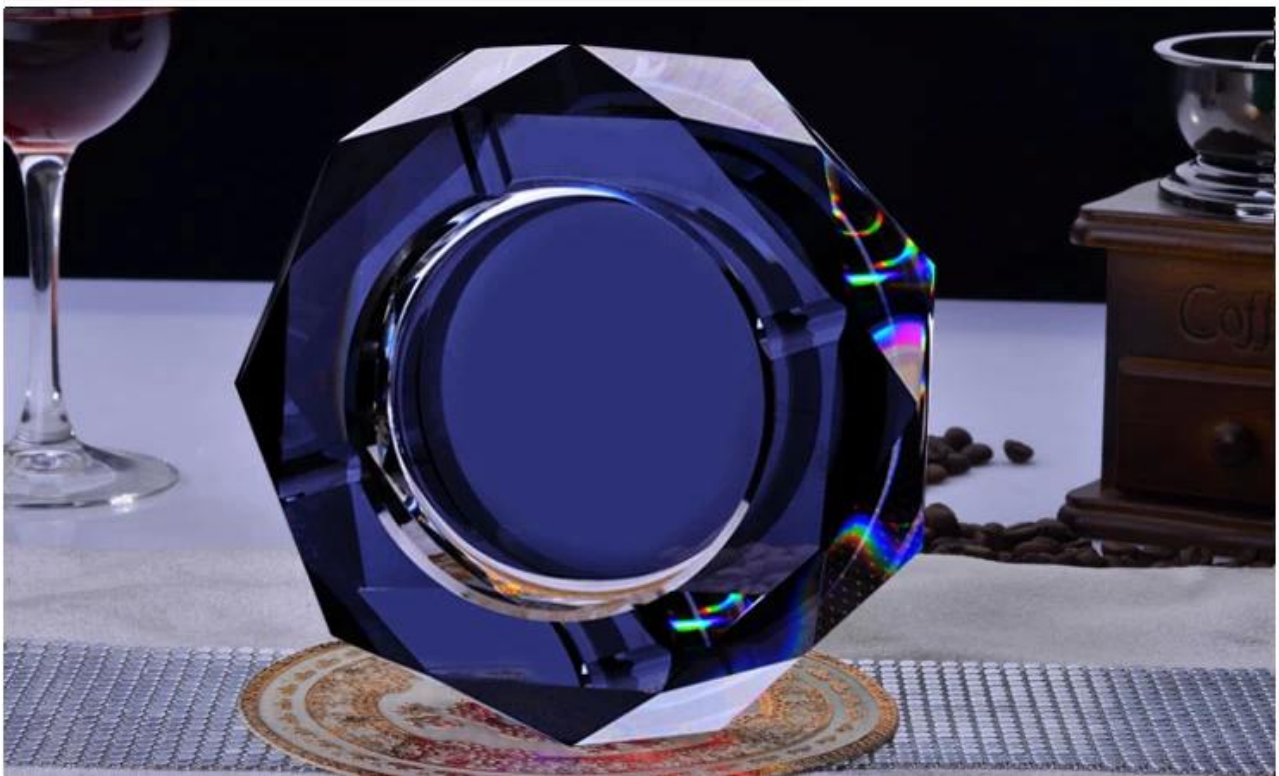
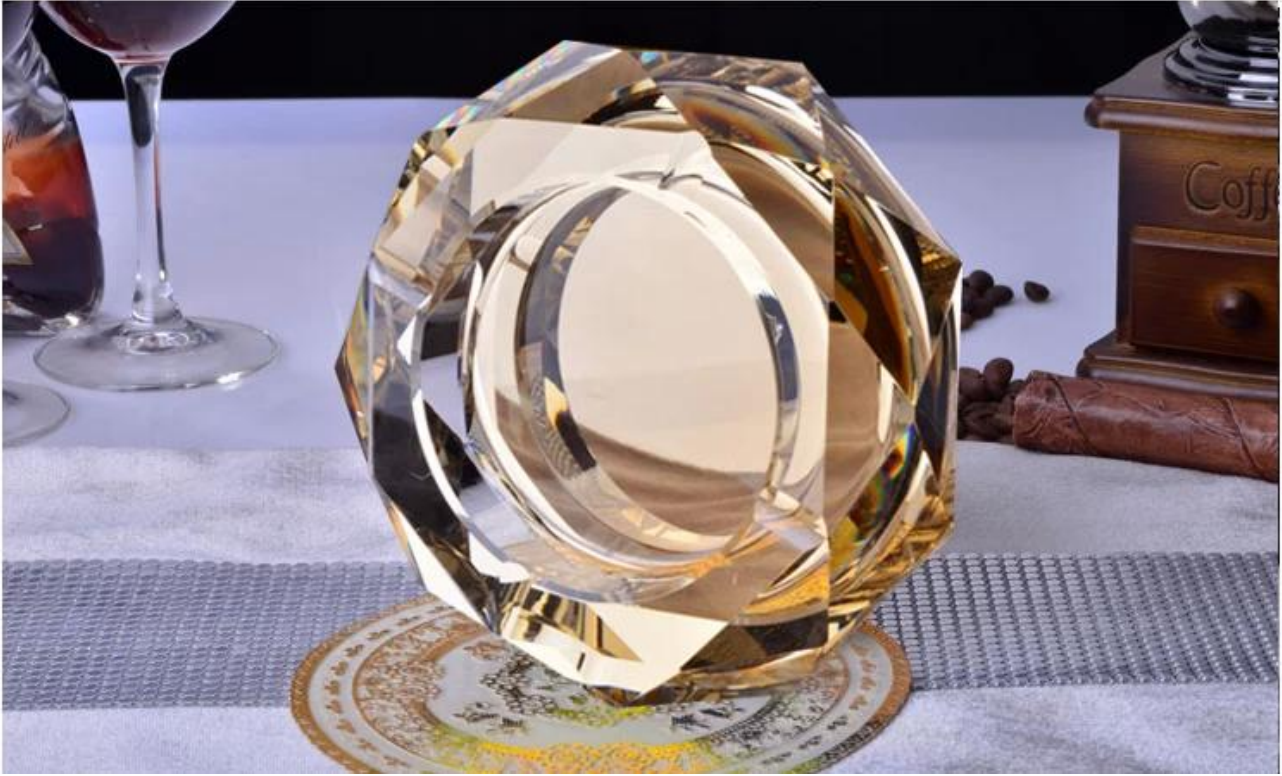
Item No.:	
Size:	
Material:	Personalized glass ashtrays
Process:	Machine production
Samples time:	1. 5~10 days if at exit shaped and size of glass. 2. 15~20 days if need new shape or size of glass.
Packing:	1. Normal packing, 24 or 36pcs into export carton, Carton with cardboard divider; 2. Paper tray pallet packing; 3. Customized box.
Product capacity:	500,000~1,000,000 pcs per Month
Delivery time:	About 30-45days, but if you have a urgent need for the products, we can put your order into priority.
Payment terms:	Usually pay by T/T, Western Union, L/C or others according to your requirement.
Transportation:	By sea, by air, by express and your shipping agent is acceptable.
Product features:	1. Food safe grade glass body. It doesn't contain BPA, lead, cadmium or any other harmful things to human body; 2. It is freezer safe; 3. The material is recyclable because it is totally mineral substance; 4. It is environmental safe.

For your choose:	<ol style="list-style-type: none"> 1. Any logo printing on the glass body. 2. Any color painted, frost, electro plate ,pattern laser carver for the finish; 3. Special package like shrink wrap, color gift box, white gift box etc: 4. Open new mould for new glass and some accessories such as wood, plastic or metal as you like; 5. Different size and shapes meet your needs.
------------------	--

personalized glass ashtrays photos:







What are the personalized glass ashtrays applications?



- Hotels
- Party
- Wedding breakfast
- Love confession
- Birthday
- Start business
- Celebrating
- Home

Our certifications:



Sedex Members Ethical Trade Audit (SMETA) Report

Version 5.0 Dec 2014, 2/4 Pillar Audit; replaces version 4.0 May 2012

Business Name	Vendor LLC Shenzhen Representative office
Site country	China
Site name	Wenrui Warming Craft & Art Co., Ltd.
Parent Company name (if the site)	Not applicable
SMETA Audit Type	<input checked="" type="checkbox"/> 2-Pillar <input type="checkbox"/> 4-Pillar
Date of Audit	17 December 2014

Audit Content:
(1) A SMETA audit was conducted which included some or all of Labour Standards, Health and Safety, Environment and Business ethics. The SMETA Best Practice Guidance version 5 December 2013 was applied. The scope of workers included all types of site e.g. direct employees, agency workers, workers employed by service providers, and workers provided by other contractors. Any deviations from the SMETA Methodology are stated with reasons for deviation in the SMETA Declaration.

(2) The audit scope was against the following reference documents:
2-Pillar SMETA Audit
• ILO Basic Code
• SMETA Additions:
– Management systems and code implementation;
– Commitment to Work & Integration;
– Subcontracting and hiring working;
3-Pillar SMETA:
– 2-Pillar requirements (plus)
– Additional Pillar assessment of Environment;
– Additional Pillar assessment of Business Ethics
The new ILO Working Hours Clause
– Now integrated into this latest SMETA version.

Where appropriate non-compliance were noted against the ILO code / SMETA Additions & Evaluation and recorded as non-compliance on both the audit report, CAPs and on Sedex.



Alibaba.com Assessed Supplier



Assessment Report

Presented to:
Shenzhen Ruixin Glassware Co., Ltd.
深圳市瑞信玻璃制品有限公司

Gold Supplier & Assessed Company	<input checked="" type="checkbox"/> Self-owned <input type="checkbox"/> Wholly Owned <input type="checkbox"/> Shareholder/Partner Relationship
Relationship	<input type="checkbox"/> Kinship Inherent Owners <input type="checkbox"/> Cooperation Partner
Company Address	Floor 5, No. 12, 3rd Row, Kofu Industrial Park, Kofu, Shaolin, Bei'an Suburb, Shenzhen City, Guangdong Province, China
City / Country	Shenzhen, China
Company of Assessment	Alibaba
Gold Supplier Member ID	ngsbn
Gold Supplier Company Name	Shenzhen Ruixin Glassware Co., Ltd.
Contact Person	Ms. Coco Lin
Phone Number	0086-755-82621072
Fax Number	0086-755-82621071
Email	sales@ruixinglassware.com
Website Address (URL)	http://ruixinglassware.en.alibaba.com

Service Provided by Bureau Veritas Certification
Report No.: 1606204



Who are we?



Shenzhen Ruixin glassware company are a very professional glassware company, and have been in this field over 15 years.

We have our head office in Shenzhen, and have three factories, one is located in Shenzhen too, another two factories are in Shanxi, which are the biggest hand painting factory in China too.

Recently, Ruixin passed Sedex factory audit. Inspectors from SGS are very happy with our factory and praised that we are the most tidy and clean glass factory he visited.

Our company also celebrates our 10 years anniversary in 2015. In order for our factory to have a big development, we invested a series of machines, such as automatic spray machine, electroplated machine, etching and sandblasting machines.

Clients and business partners:



Trade terms:

Payment:

1. Usually we accept payment by L/C, Paypal, Escrow, T/T and Western Union.
2. 30% deposit, 70% balance before shipment.

About the shipment:

1. Shipping terms are depends on clients order quantity. We can use Express, LCL, FCL
2. Items will be shipped before careful checking,
3. We will update the delivery status timely after the goods are sent out.

Product packing:



Why choose us?



1. **Household Expo-Autumn.** 2009 to 2013
2. **Global Sources Fair**, AsiaWorld-Expo. 2010 to 2016
3. **International Gifts**, Handicrafts, Watches & Houseware Fair. 2014 to 2016

Our sales team



We are ready to serve you !



10 年专注玻璃礼品定制 10 years' glassware exporting experience



How to contact us?

Put your inquiry details in the **box below**, click "**Send**" now!