

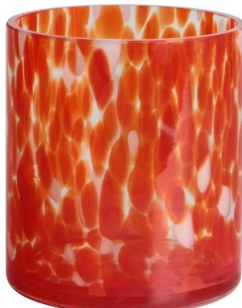
Factory 200ml 6oz green and yellow Confetti glass candle jar

Specification

Place of Origin	China, Shanxi
Brand Name	Ruixin Glass
Product name	Confetti glass candle jar
Material	Soda lime glass
Color	(Customizable)
MOQ	2000pcs
Sample	7 Working Days



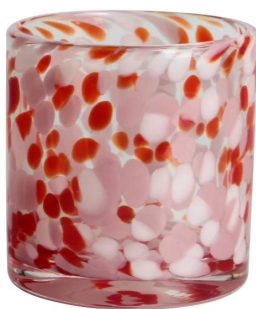
RXDS42115
Size: T8.8*B8.8*H9.8cm
Capacity: 400ml/10.2oz
Weight: 450g



RXGQ1812
Size: T8*B8*H9cm
Capacity: 270ml/6.9oz
Weight: 270g



RXDS3611-8
Size: T8.1*B5*H8cm
Capacity: 270ml/6.9oz
Weight: 328g



RXDS3711-1
Size: T8*B8*H8cm
Capacity: 240ml/6.1 oz
Weight: 375g



RXDS4112
Size: T8.1*B8*H12.7cm
Capacity: 430ml/10.9oz
Weight: 480g



RXDS4115
Size: T8.1*B8*H10.3cm
Capacity: 340ml/8.6oz
Weight: 405g



RXDS10100
Size: T10*B9.9*H10cm
Capacity: 525ml/13.3oz
Weight: 555g



RXDS880
Size: T8*B7.9*H8cm
Capacity: 250ml/6.4oz
Weight: 324g



RXZL68
Size: T10.3*B6*H15.2cm
Capacity: 1240ml/31.5oz
Weight: 1062g



RXZL37
Size: T9*B7*H12.5cm
Capacity: 850ml/21.6oz
Weight: 835g



RXZL12
Size: T6.5*B5.5*H10.7cm
Capacity: 425ml/11.6oz
Weight: 351g



RXDS3611-7
Size: T7.7*B4.7*H8.9cm
Capacity: 300ml/7.6oz
Weight: 285g



RXGQ12120
Size: T11.9*B11.8*H12cm
Capacity: 1075ml/27.3oz
Weight: 518g



RXDS33135-4
Size: T10*B10*H10cm
Capacity: 555ml/14.1oz
Weight: 474g



RXGQ2111
Size: T8*B8*H8cm
Capacity: 240ml/6.1oz
Weight: 339g



RXGQ1816
Size: T9*B9.8*H16cm
Capacity: 910ml/23.1oz
Weight: 583g



RXGQ5713
Size: T9*B9*H10cm
Capacity: 500ml/12.7oz
Weight: 394g



RXGQ3311
Size: T8*B8*H9cm
Capacity: 270ml/6.9oz
Weight: 430g



RXGQ500
Size: T7.9*B8.5*H8.3cm
Capacity: 480ml/12.2oz
Weight: 369g



RXGQ78
Size: T7*B8.5*H6.7cm
Capacity: 270ml/6.9oz
Weight: 165g

Production Processing

Packing & Delivery













Green Tea & Citrus
Sandalwood & Vanilla

Sandalwood & Vanilla
Lavender & Chamomile

Lavender & Chamomile
Rose & Ylang-Ylang

Rose & Ylang-Ylang
Jasmine & Sandalwood

Jasmine & Sandalwood

Five Scented Candles
Scented Candles / Five Scented Candles
Scented Candles / Five Scented Candles



Layered psd, Easy editable via smart
object, High resolution 3000x2250 at
300dpi, Photorealistic result, Changeable
object color, Changeable background,
Separate light and shadow layers.

**Candle
Package
Mockup**



Amber
Noir

TUBEROSE, VIOLETS
& AMBER

SHEARER CANDLES

S
SHEARER
CANDLES
— SINCE 1897 —



RUIXIN GLASSWARE®

— since 2005 —

Other Information

- **Original design statement:** The styles and labels of the [aromatherapy bottles](#) and [candle jars](#) shown in the pictures were originally designed by the members of Ruixin Glass' Business Department in March. They were then produced as samples in the factory and photographed in our office studio. Currently, all samples are stored in Ruixin Glass' sample room. We kindly request that other companies refrain from unauthorized use of these images.
- **About factory:** With extensive experience and a dedicated team, Ruixin Glass specializes in customizing glass packaging for both emerging and established aromatherapy brands. We have strong connections with factories and all members of our Business Department have hands-on experience in the production process. We welcome inquiries and value your feedback.
- **About customization & ready-to-ship:** As we primarily focus on customized products, we do not keep a large inventory of ready-made stock with various image styles. However, we maintain a small stock of samples to send to potential business partners who express cooperative intentions.
 - Customizable items with minimum MOQ:
 - Surface treatment options, such as spray (misted/smooth surface), electroplating, etc.
 - Customization of brand labels.
 - Silk screen logo customization.
 - Lid customization.
 - Customizable items that require a higher order quantity:
 - Shape customization.
 - Thread specifications customization (for threaded bottles).
- **About response time:** Our dedicated Business Department team is committed to providing attentive service and prompt responses to your inquiries, regardless of your location or the time you send your message. [Contact us now!](#)