

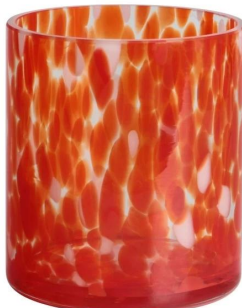
# 500ml 13oz green and blue fritted Confetti glass candle jar

## Specification

Place of Origin	China, Shanxi
Brand Name	Ruixin Glass
Product name	Confetti glass candle jar
Material	Soda lime glass
Color	(Customizable)
MOQ	2000pcs
Sample	7 Working Days



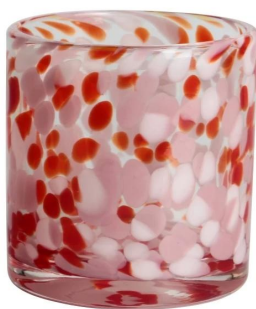
**RXDS42115**  
Size: T8.8\*B8.8\*H9.8cm  
Capacity: 400ml/10.2oz  
Weight: 450g



**RXGQ1812**  
Size: T8\*B8\*H9cm  
Capacity: 270ml/6.9oz  
Weight: 270g



**RXDS3611-8**  
Size: T8.1\*B5\*H8cm  
Capacity: 270ml/6.9oz  
Weight: 328g



**RXDS3711-1**  
Size: T8\*B8\*H8cm  
Capacity: 240ml/6.1 oz  
Weight: 375g



**RXDS4112**  
Size: T8.1\*B8\*H12.7cm  
Capacity: 430ml/10.9oz  
Weight: 480g



**RXDS4115**  
Size: T8.1\*B8\*H10.3cm  
Capacity: 340ml/8.6oz  
Weight: 405g



**RXDS10100**  
Size: T10\*B9.9\*H10cm  
Capacity: 525ml/13.3oz  
Weight: 555g



**RXDS880**  
Size: T8\*B7.9\*H8cm  
Capacity: 250ml/6.4oz  
Weight: 324g



**RXZL68**  
Size: T10.3\*B6\*H15.2cm  
Capacity: 1240ml/31.5oz  
Weight: 1062g



**RXZL37**  
Size: T9\*B7\*H12.5cm  
Capacity: 850ml/21.6oz  
Weight: 835g



**RXZL12**  
Size: T6.5\*B5.5\*H10.7cm  
Capacity: 455ml/11.6oz  
Weight: 351g



**RXDS3611-7**  
Size: T7.7\*B4.7\*H8.9cm  
Capacity: 300ml/7.6oz  
Weight: 285g



**RXGQ12120**  
Size: T11.9\*B11.8\*H12cm  
Capacity: 1075ml/27.3oz  
Weight: 518g



**RXDS33135-4**  
Size: T10\*B10\*H10cm  
Capacity: 555ml/14.1oz  
Weight: 474g



**RXGQ2111**  
Size: T8\*B8\*H8cm  
Capacity: 240ml/6.1oz  
Weight: 339g



**RXGQ1816**  
Size: T9\*B9.8\*H16cm  
Capacity: 910ml/23.1oz  
Weight: 583g



**RXGQ5713**  
Size: T9\*B9\*H10cm  
Capacity: 500ml/12.7oz  
Weight: 394g



**RXGQ3311**  
Size: T8\*B8\*H9cm  
Capacity: 270ml/6.9oz  
Weight: 430g



**RXGQ500**  
Size: T7.9\*B8.5\*H8.3cm  
Capacity: 480ml/12.2oz  
Weight: 369g



**RXGQ78**  
Size: T7\*B8.5\*H6.7cm  
Capacity: 270ml/6.9oz  
Weight: 165g

# Production Processing

# Packing & Delivery















Layered psd, Easy editable via smart  
object, High resolution 3000x2250 at  
300dpi, Photorealistic result, Changeable  
object color, Changeable background,  
Separate light and shadow layers.

**Candle  
Package  
Mockup**



*Amber  
Noir*

TUBEROSE, VIOLETS  
& AMBER

SHEARER *S* CANDLES

*S*  
SHEARER  
CANDLES  
— SINCE 1897 —



RUIXIN GLASSWARE<sup>®</sup>

— since 2005 —

# Other Information

- **Original design statement:** The styles and labels of the [aromatherapy bottles](#) and [candle jars](#) shown in the pictures were originally designed by the members of Ruixin Glass' Business Department in March. They were then produced as samples in the factory and photographed in our office studio. Currently, all samples are stored in Ruixin Glass' sample room. We kindly request that other companies refrain from unauthorized use of these images.
- **About factory:** With extensive experience and a dedicated team, Ruixin Glass specializes in customizing glass packaging for both emerging and established aromatherapy brands. We have strong connections with factories and all members of our Business Department have hands-on experience in the production process. We welcome inquiries and value your feedback.
- **About customization & ready-to-ship:** As we primarily focus on customized products, we do not keep a large inventory of ready-made stock with various image styles. However, we maintain a small stock of samples to send to potential business partners who express cooperative intentions.
  - Customizable items with minimum MOQ:
    - Surface treatment options, such as spray (misted/smooth surface), electroplating, etc.
    - Customization of brand labels.
    - Silk screen logo customization.
    - Lid customization.
  - Customizable items that require a higher order quantity:
    - Shape customization.
    - Thread specifications customization (for threaded bottles).
- **About response time:** Our dedicated Business Department team is committed to providing attentive service and prompt responses to your inquiries, regardless of your location or the time you send your message. [Contact us now!](#)