

White Black Colored 8oz Glass Candle Holder Jars Container For Candle Making

What are the functions of our glass candle jar?

- 1) Machine blasted /pressed, elegant pattern, widely use in restaurant/hotel/home/party etc.
- 2) Special design and accurate quality control make sure every piece offered is as perfect as possible.
- 3) Logo customized, pattern, size and color etc. could be done according to your drawings. -Decal, Carving, electro plating, sand blasting, paint spraying, etc.
- 4) Packaging : PVC box, Windows box, color box, shrinkage wrap are available to make sure it can be sold directly. Standard export packing assure safety shipment.
- 5) Timely delivery, 12000 square meter self-owned warehouse holding large stock to enable our supply.
- 6) Eco-Friendly, pass food standard test.

What are the specifications of glass candle jar?

Category: Glass Candle Jar

Item No:	RXCD-8090
Material:	Soda lime glass
Process:	Machine pressed
Could Pass:	Food test
Samples time:	1. 5~10 days if at exit shaped and size of glass. 2. 15~20 days if need new shape or size of glass.
Packing:	1. Normal packing, 48 pcs into export carton, Carton with cardboard divider; 2. Paper tray pallet packing; 3. Customized box.
Product capacity:	500,000~1,000,000 pcs per Month
Delivery time:	About 30-45 days, but if you have a urgent need for the products, we can put your order into priority.
Payment terms:	Usually pay by T/T, Western Union, L/C or others according to your requirement.

Transportation:	By sea, by air, by express and your shipping agent is acceptable.
For your choose:	<ol style="list-style-type: none"> 1. Any color spray on the glass body. 2. Any color painted, frost, electro plate ,pattern laser carver for the finish; 3. Special package like shrink wrap, color gift box, white gift box etc: 4. Open new mould for new glass and some accessories such as wood, plastic or metal as you like; 5. Different size and shapes meet your needs.

Other color glass candle jars











Certifications



Sedex Members Ethical Trade Audit (SMETA) Report

Version 5.0 Dec 2014, 2014 Pillar Audit, replaced version 4.0 May 2012

Supplier Name	Shenzhen Ruijin Assessment Office
Site Location	China
SMETA No.	100077617
Parent Company Name of the site	HUI GUANG
SMETA Audit No.	17/00000000000000000000
Date of Audit	17 December 2014

Audit Context
 1. A SMETA audit was conducted at the production sites of HUI GUANG Standards, Health and Safety, Environment and Business ethics. The SMETA Best Practice Auditor visited 17 December 2014 and visited the scope of business indicated at the top of the site map, design drawings, quality control, workers employed by various parties, and contracts provided by other contractors. Any deviations from the SMETA Methodology are stated with necessary for auditors in the SMETA Declaration.

2. The audit review was against the following reference documents:
 2.1 SMETA Audit
 2.2 EU Directives
 2.3 SMETA Best Practice
 2.4 Management systems and code of conduct/ethics
 2.5 Compliance to laws & regulations
 2.6 Subcontracting and/or in-house working
 2.7 SMETA Standards
 2.8 ILO Conventions (ILO 102)
 2.9 Additional 100 assessment of Environment
 2.10 Additional 100 assessment of Business Ethics
 The new 17-Working from Home
 New adopted into the latest SMETA version

When appropriate, this compliance data report against the 270 SMETA SMETA Best Practice Standards and assessed as non-compliance on SMETA Audit Report. SMETA audit of Sites.



Alibaba.com Assessed Supplier



Assessment Report

Presented to
Shenzhen Ruijin Glassware Co., Ltd.
深圳市瑞信玻璃制品有限公司

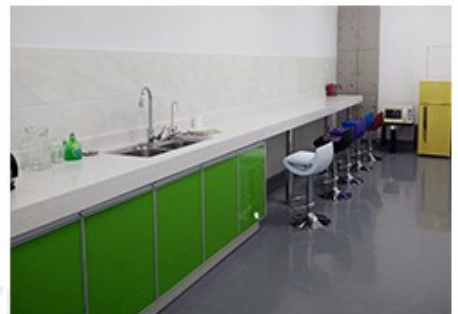
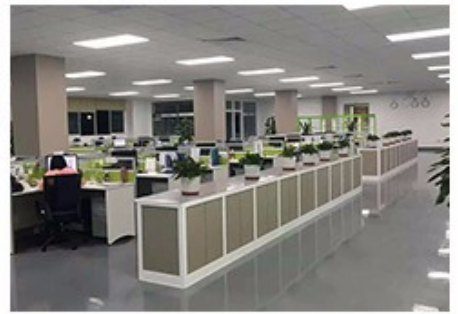
Gold Supplier & Assessed Company	<input type="checkbox"/> Silver Supplier <input type="checkbox"/> Bronze Supplier <input type="checkbox"/> Standard Partner
Supplier Type	<input type="checkbox"/> Agent/Wholesale Service <input type="checkbox"/> Cooperation Partner
Company Address	Floor 1, No. 12, Jiu Ren, Jishi Industrial Park, Kaitian, Baoan, Bao'an District, Shenzhen City, Guangdong Province, China
City / Country	Shenzhen, China
Company of Assessment	Alibaba
Gold Supplier Member ID	1000000000000000000000
Gold Supplier Company Name	Shenzhen Ruijin Glassware Co., Ltd.
Contact Person	Ms. Coco Liu
Phone Number	0086-755-23121073
Fax Number	0086-755-23121071
Email	sales@ruijinguass.com
Website Address (URL)	http://ruijinguass.com

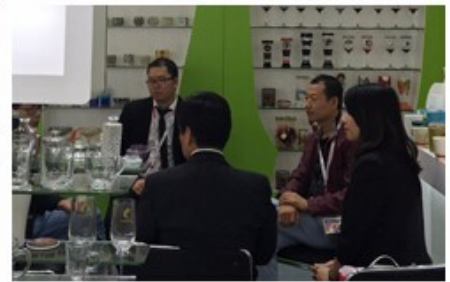


Who are we?

Shenzhen Ruixin glassware company are a very professional glassware company, and have been in this field over **17 years**. We have our head office in Shenzhen, and have **three factory**, one is located in Shenzhen too, another two factory are in Shanxi, which are the biggest hand painting factory in China too. Recently, Ruixin **passed BSCI** factory audit.

Our company also celebrates our 10 years anniversary in 2015. In order for our factory to have a big development, we invested a series of machines, such as automatic spray machine, electroplated machine, etching and sandblasting machines.





For your choose & business partners

Our Services:

1. Any logo printing on the glass body.
2. Any color painted, frost, electro plate ,pattern laser carver for the finish;
3. Special package like shrink wrap, color gift box, white gift box etc;
4. Open new mould for new glass and some accessories such as wood,

plastic or metal as you like;

5. Different size and shapes meet your needs.



Trade terms

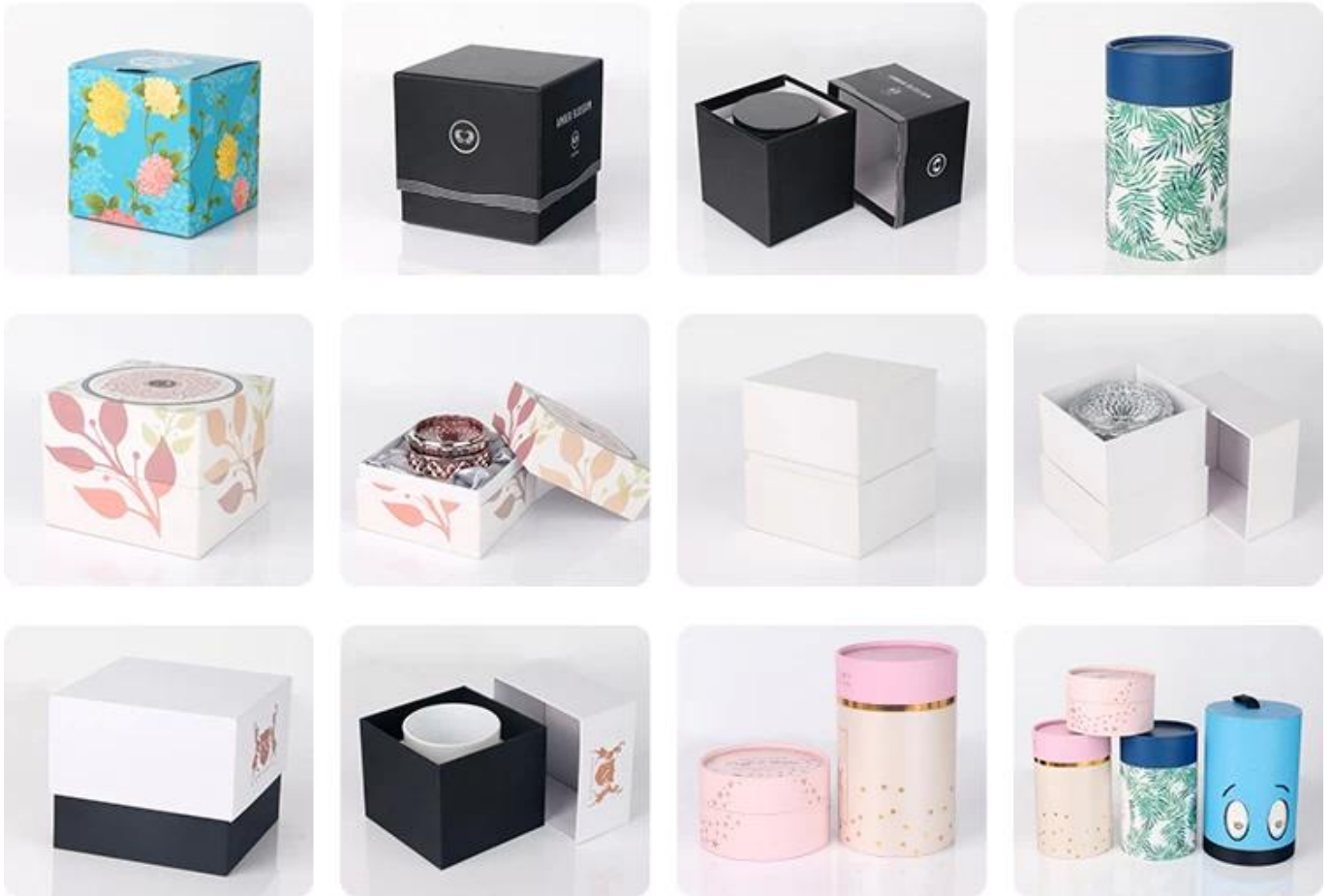
Payment:

1. Usually we accept payment by L/C, Paypal, Escrow, T/T and Western Union.
2. 30% deposit, 70% balance before shipment.

About the shipment:

1. Shipping terms are depends on clients order quantity. We can use Express, LCL, FCL
2. Items will be shipped before careful checking.
3. We will update the delivery status timely after the goods are sent out.

Product packing



FAQ:

Q: Can you do printing on the glass candle holder jars?

A: Yes, we can. We could offer various printing ways: the screen printing, hot stamping, decal attachment, frosting, sandblasting, etc.

Q: Can you combine many items assorted in one container in my first order?

A: Yes, we can. But the quantity of each ordered item should reach our MOQ.

Q: What is the normal lead time?

For Stock products, we will send goods to you within 7-15 work days after we receive your payment.

For OEM products, the delivery time is 30-35 work days after we receive your payment.

Q: Are you factory or trading company?

A: We are export department in Shenzhen ,and we have a factory in Shan'xi,30000 square meters production area with around 300 workers

Q: Can you accept a smaller order Quantity?

A: Sure, If you just want to make a trial order less than our MOQ,we will try our best to provide you the lowest price for you with the diligent service and we hope we can build up a cooperative relationship.

Q: What kind of package for this product?

A: We have inside packaging and outside carton, it is in a 5 ply carton.And we could do clients' customized box.

Q: Do you have your own logistics provider?

A Yes, now we have our own logistics provider by alibaba oncetouch, and some logistic companies in Shenzhen, but if have order requirement for provider, we can coordinate your arrangements.

Q: How to get sample from your company?

A: If you have a freight collected number such as DHL, UPS, TNT, we can give our sample for free. But if you want to make any design, the sample fees will be founded to you once you place an order with us at last.

Q: Can you provide certificates for your products?

A: Sure, we can provide our certificates for you.

Q: What is your delivery date?

A: Our delivery date is about 30-45 days,but if you have a urgent need for the products, we can put your order into priority.

Q: What is your payment term?

A: We usually pay by T/T,Western Union,L/C or others according to your requirement.

Q: Can you print our logo on the product?

A: Yes,but the MOQ is 2000pcs to 5000pcs.