

Luxury Colorful 10oz Iridescent Holographic Candle Holder Glass Jars For Candle Making

What are the functions of our glass candle jar?

- 1) Machine blasted /pressed, elegant pattern, widely use in restaurant/hotel/home/party etc.
- 2) Special design and accurate quality control make sure every piece offered is as perfect as possible.
- 3) Logo customized, pattern, size and color etc. could be done according to your drawings. -Decal, Carving, electro plating, sand blasting, paint spraying, etc.
- 4) Packaging : PVC box, Windows box, color box, shrinkage wrap are available to make sure it can be sold directly. Standard export packing assure safety shipment.
- 5) Timely delivery, 12000 square meter self-owned warehouse holding large stock to enable our supply.
- 6) Eco-Friendly, pass food standard test.

What are the specifications of glass candle jar?

Category: Glass Candle Jar

Item No:	RXCD-8090U
Material:	Soda lime glass
Process:	Machine pressed
Could Pass:	Food test
Samples time:	1. 5~10 days if at exit shaped and size of glass. 2. 15~20 days if need new shape or size of glass.
Packing:	1. Normal packing, 48 pcs into export carton, Carton with cardboard divider; 2. Paper tray pallet packing; 3. Customized box.
Product capacity:	500,000~1,000,000 pcs per Month
Delivery time:	About 30-45 days, but if you have a urgent need for the products, we can put your order into priority.

Payment terms:	Usually pay by T/T,Western Union,L/C or others according to your requirement.
Transportation:	By sea, by air, by express and your shipping agent is acceptable.
For your choose:	<ol style="list-style-type: none">1. Any color spray on the glass body.2. Any color painted, frost, electro plate ,pattern laser carver for the finish;3. Special package like shrink wrap, color gift box, white gift box etc:4. Open new mould for new glass and some accessories such as wood, plastic or metal as you like;5. Different size and shapes meet your needs.

Other shape iridescent color glass candle jars











Certifications



Sedex Members Ethical Trade Audit (SMETA) Report

Version 5.0 (Dec 2014, 2014 Pillar Audit, replaced version 4.0 (May 2013))

Supplier Name	Shenzhen Ruixin Glassware Co., Ltd.
Site Location	China
SMETA Ref No.	SMETA-CHINA-1411-0001
Parent Company Name of the site	Not applicable
SMETA Audit Type	<input checked="" type="checkbox"/> Site <input type="checkbox"/> Online
Date of Audit	17 December 2014

Audit Context

1. A SMETA audit was conducted at the industrial zone of Shenzhen Ruixin Glassware Co., Ltd. (Ruijin Glassware Co., Ltd.) in Shenzhen, Guangdong province, China. The audit was conducted by Sedex, a leading international ethical trade audit organization. The audit was conducted in accordance with the SMETA Standard, which is based on the ISO 26000 standard. The audit was conducted by a team of experienced auditors who are trained in the SMETA Standard. The audit was conducted in accordance with the SMETA Standard, which is based on the ISO 26000 standard. The audit was conducted by a team of experienced auditors who are trained in the SMETA Standard.

Audit Scope

The audit was conducted in accordance with the SMETA Standard, which is based on the ISO 26000 standard. The audit was conducted by a team of experienced auditors who are trained in the SMETA Standard.



Alibaba.com Assessed Supplier



Assessment Report

Presented to
Shenzhen Ruixin Glassware Co., Ltd.
深圳市瑞信玻璃制品有限公司

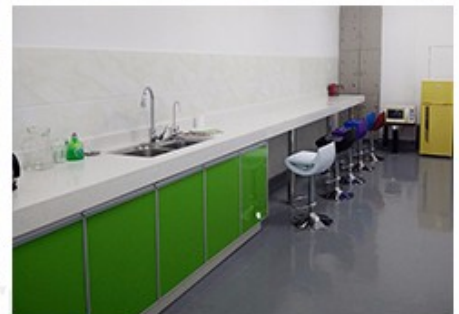
Gold Supplier & Assessed Supplier	<input checked="" type="checkbox"/> Silver Supplier <input type="checkbox"/> Bronze Supplier <input type="checkbox"/> Verified Supplier
Company Address	Plot 1, No. 12, Jiahe Road, Jiahe Industrial Park, Xixiang, Bao'an District, Shenzhen City, Guangdong Province, China
City / Country	Shenzhen, China
Company of Assessment	Alibaba
Gold Supplier Member ID	14989
Gold Supplier Company Name	Shenzhen Ruixin Glassware Co., Ltd.
Contact Person	Ms. Carol Lam
Phone Number	86-755-26221075
Fax Number	86-755-26221071
Email	sales@ruixinglass.com
Website Address (URL)	http://ruixinglass.com



Who are we?

Shenzhen Ruixin glassware company are a very professional glassware company, and have been in this field over **17 years**. We have our head office in Shenzhen, and have **three factory**, one is located in Shenzhen too, another two factory are in Shanxi, which are the biggest hand painting factory in China too. Recently, Ruixin **passed BSCI** factory audit.

Our company also celebrates our 10 years anniversary in 2015. In order for our factory to have a big development, we invested a series of machines, such as automatic spray machine, electroplated machine, etching and sandblasting machines.





For your choose & business partners

Our Services:

1. Any logo printing on the glass body.
2. Any color painted, frost, electro plate ,pattern laser carver for the finish;
3. Special package like shrink wrap, color gift box, white gift box etc;
4. Open new mould for new glass and some accessories such as wood,

plastic or metal as you like;

5. Different size and shapes meet your needs.



Trade terms

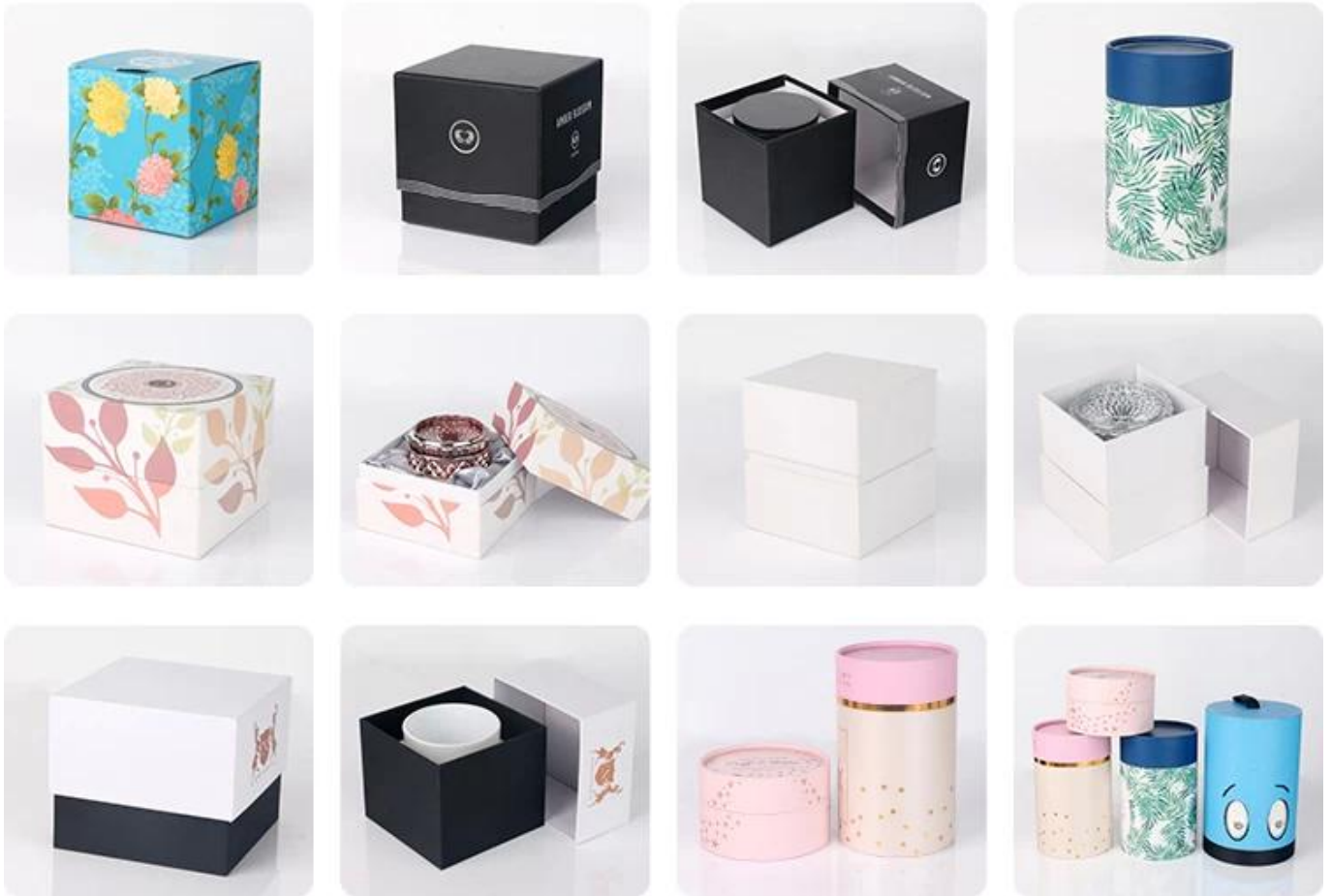
Payment:

1. Usually we accept payment by L/C, Paypal, Escrow, T/T and Western Union.
2. 30% deposit, 70% balance before shipment.

About the shipment:

1. Shipping terms are depends on clients order quantity. We can use Express, LCL, FCL
2. Items will be shipped before careful checking.
3. We will update the delivery status timely after the goods are sent out.

Product packing



FAQ:

Q: Can you do printing on the glass candle holder jars?

A: Yes, we can. We could offer various printing ways: the screen printing, hot stamping, decal attachment, frosting, sandblasting, etc.

Q: Can you combine many items assorted in one container in my first order?

A: Yes, we can. But the quantity of each ordered item should reach our MOQ.

Q: What is the normal lead time?

For Stock products, we will send goods to you within 7-15 work days after we receive your payment.

For OEM products, the delivery time is 30-35 work days after we receive your payment.

Q: Are you factory or trading company?

A: We are export department in Shenzhen ,and we have a factory in Shan'xi,30000 square meters production area with around 300 workers

Q: Can you accept a smaller order Quantity?

A: Sure, If you just want to make a trial order less than our MOQ,we will try our best to provide you the lowest price for you with the diligent service and we hope we can build up a cooperative relationship.

Q: What kind of package for this product?

A: We have inside packaging and outside carton, it is in a 5 ply carton.And we could do clients' customized box.

Q: Do you have your own logistics provider?

A Yes, now we have our own logistics provider by alibaba oncetouch, and some logistic companies in Shenzhen, but if have order requirement for provider, we can coordinate your arrangements.

Q: How to get sample from your company?

A: If you have a freight collected number such as DHL, UPS, TNT, we can give our sample for free. But if you want to make any design, the sample fees will be founded to you once you place an order with us at last.

Q: Can you provide certificates for your products?

A: Sure, we can provide our certificates for you.

Q: What is your delivery date?

A: Our delivery date is about 30-45 days,but if you have a urgent need for the products, we can put your order into priority.

Q: What is your payment term?

A: We usually pay by T/T,Western Union,L/C or others according to your requirement.

Q: Can you print our logo on the product?

A: Yes,but the MOQ is 2000pcs to 5000pcs.

How to contact us?

Put your inquiry details in the **box below**, click "**Send**" now!

Or just contact me directly.

Attn: Sunny Wu

Tel: (86) 755 82821572

Email: sales03@szrxglassware.com

Skype:ruixinglassware3