



Ruixin Glass 瑞信玻璃
SHENZHEN RUIXIN GLASSWARE CO., LTD

HIGH QUALITY OF LIFE
30000 SQUARE METERS PRODUCTION AREA
3万亩生产基地，保障产品高质

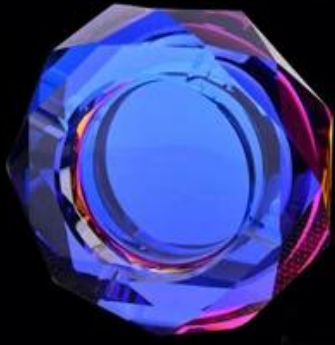


A variety of colors to choose from

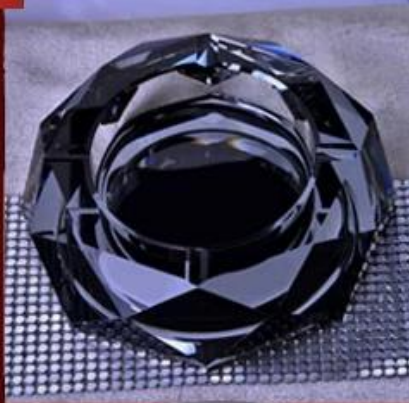
Ashtray Series

The image displays six octagonal ashtrays arranged in a 2x3 grid. Each ashtray is shown from a top-down perspective, highlighting its faceted design and vibrant color. The colors are: top-left (blue), top-middle (dark blue), top-right (rainbow spectrum), bottom-left (gold), bottom-middle (clear), and bottom-right (orange). Each ashtray sits on a circular, textured base. In the background, there are blurred images of wine glasses and coffee beans.

A variety of colors to choose from



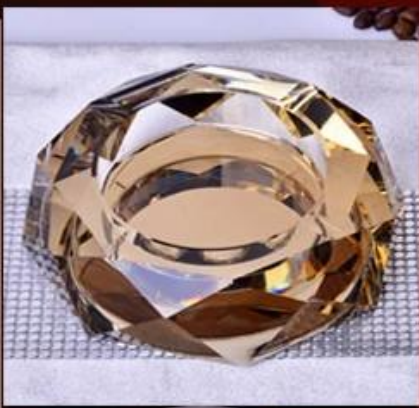
blue charm



black and silver



Symphony



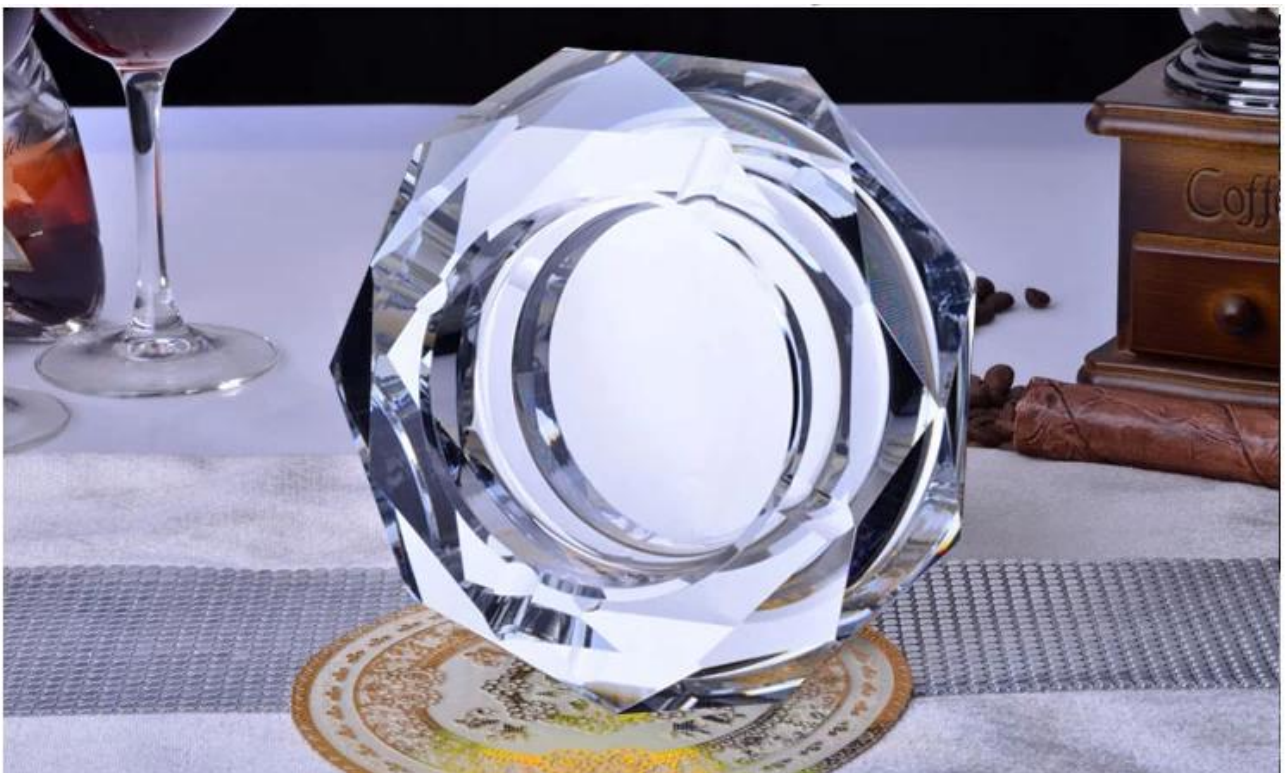
Gold

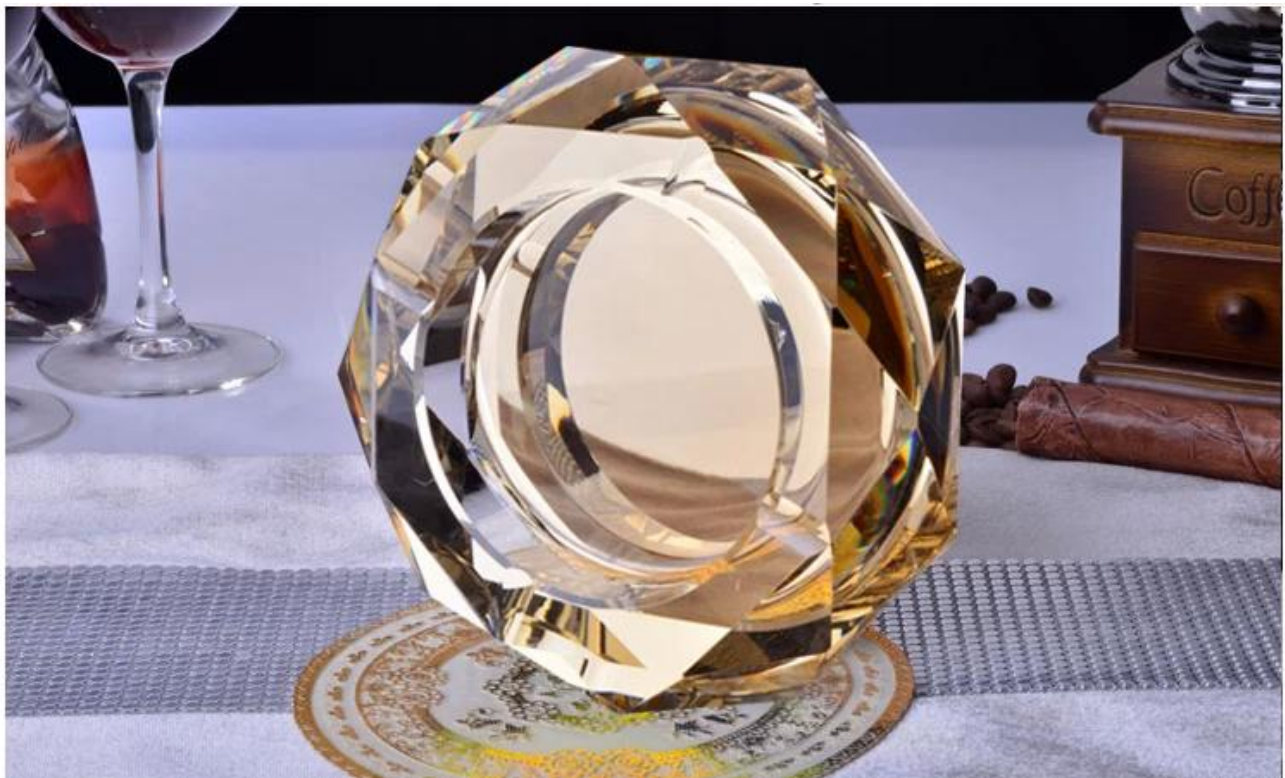
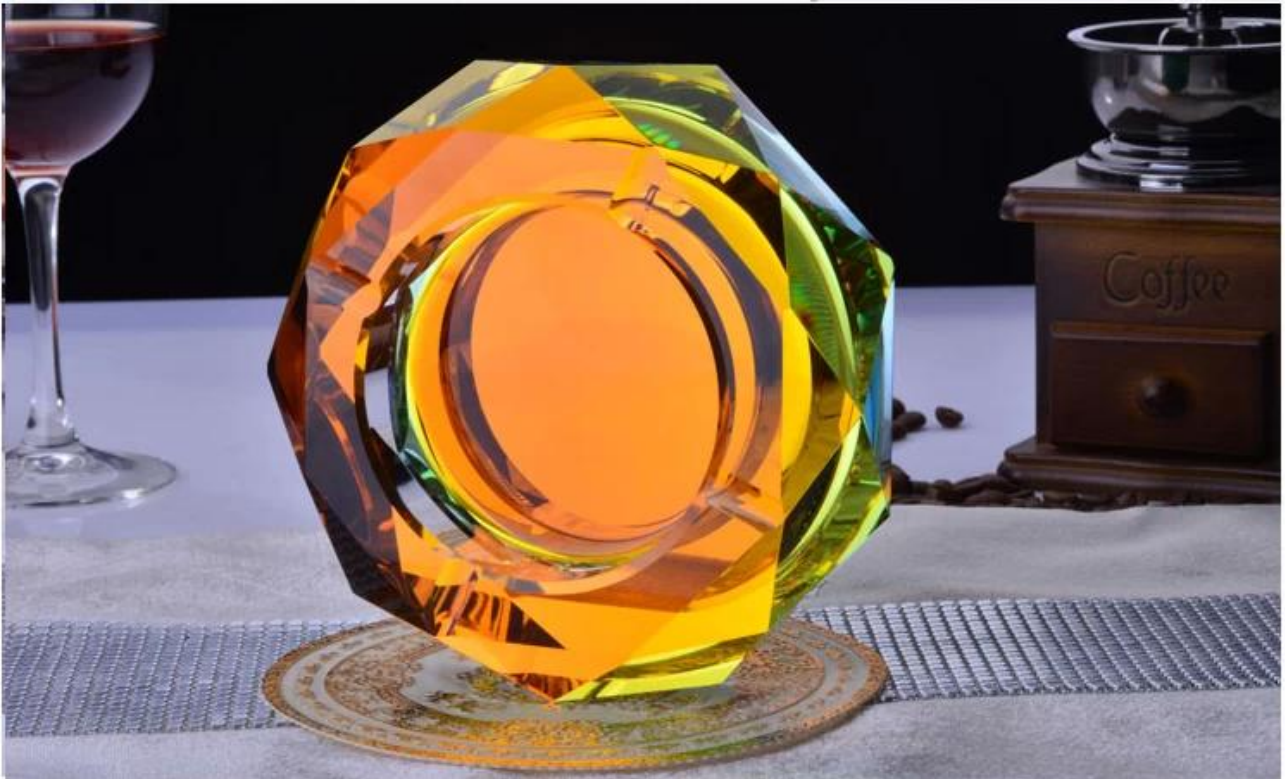


silver



orange





- □□□□
- □□□□□□
- □□□□
- □□□

□□□□□□



Sedex Members Ethical Trade Audit (SMETA) Report

Version 5.0 Dec 2014, 2/4 Pillar Audit; replaces version 4.0 May 2012.

Business Name	Vendor LLC Shenzhen Representative office
Site country	China
Site name	Wanwan Working Craft & Art Co., Ltd.
Parent Company name (if the site)	Not applicable
SMETA Audit Type	<input checked="" type="checkbox"/> 2-Pillar <input type="checkbox"/> 4-Pillar
Date of Audit	17 December 2014

Audit Content:
 (1) A SMETA audit was conducted which included some of all of Labour Standards, Health and Safety, Environment and Business ethics. The SMETA Best Practice Guidance version 5 December 2015 was applied. The scope of workers included all types of the site e.g. direct employees, agency workers, workers employed by service providers, and workers provided by other contractors. Any deviations from the SMETA Methodology are stated with reasons for deviation in the SMETA Declaration.

- (2) The audit scope was against the following reference documents:
- 2-Pillar SMETA Audit
 - ETS Base Code
 - SMETA Additions:
 - Management systems and code implementation,
 - Commitment to Work & Integration,
 - Sub-contracting and hiring working.
 - 4-Pillar SMETA:
 - 2-Pillar requirements (key)
 - Additional Pillar assessment of Environment
 - Additional Pillar assessment of Business Ethics
 - The new ETS Working Hours Clause

Where appropriate non-compliance was raised against the ETS code / SMETA Additions & Evaluation and recorded as non-compliances on both the audit report, CAPA and on Sedex.



Alibaba.com Assessed Supplier



Assessment Report

Presented to
Shenzhen Ruixin Glassware Co., Ltd.
 深圳市瑞信玻璃制品有限公司

Gold Supplier & Assessed Company Relationship:	<input type="checkbox"/> Self-owned <input type="checkbox"/> Wholly Owned <input type="checkbox"/> Shareholder/Partner <input type="checkbox"/> Kinship Inherent Owners <input type="checkbox"/> Cooperation Partner
Company Address	Floor 5, No. 12, 3rd Row, Xinhai Industrial Park, Xinhai, Shahe, Tang'an Suburb, Shenzhen City, Guangdong Province, China
City / Country	Shenzhen, China
Company of Assessment	Alibaba
Gold Supplier Member ID	19288
Gold Supplier Company Name	Shenzhen Ruixin Glassware Co., Ltd.
Contact Person	Ms. Cindy Lam
Phone Number	8686-755-62621072
Fax Number	8686-755-62621071
Email	sales2@ruixinglassware.com
Website Address (URL)	http://ruixinglassware.en.alibaba.com

Service Provided by Bureau Veritas Certification Report No. 1904234





瑞信公司成立于1995年，注册资金1500万元人民币，占地面积30000平方米，建筑面积20000平方米。

瑞信公司通过SEDEX、SGS等国际权威机构的认证，产品质量稳定可靠。

瑞信公司自2015年起，每年投入1000多万元用于技术研发和品质提升。

瑞信公司



□□□□□□□□□□



- 1 1 Househole 2009 2013
- 2 2010 2016
- 3 Watches & 2014 2016

□□□□□□

