

# Double Wall Cups Glass 12oz Insulated Thermal Glasses For Tea, Coffee, Latte, Cappuccino, Cafe, Mil

## What are the functions of double wall glasses?

- 1)Handmade, elegant pattern, widely use in restaurant/hotel/home/party etc.
- 2)Special design and accurate quality control make sure every piece offered is as perfect as possible.
- 3)Logo customized, pattern, size and color etc. could be done according to your drawings. -Decal, Carving, electro plating, sand blasting, paint spraying, etc.
- 4Packaging : PVC box,Windows box, color box, shrinkage wrap are available to make sure it be can sold directly. Standard export packing assure safety shipment.
- 5)Timely delivery, 12000 square meter self-own warehouse holding large stock to enable our supply.
- 6)Eco-Friendly, pass food standard test.

## What are the specifications of double wall glasses?

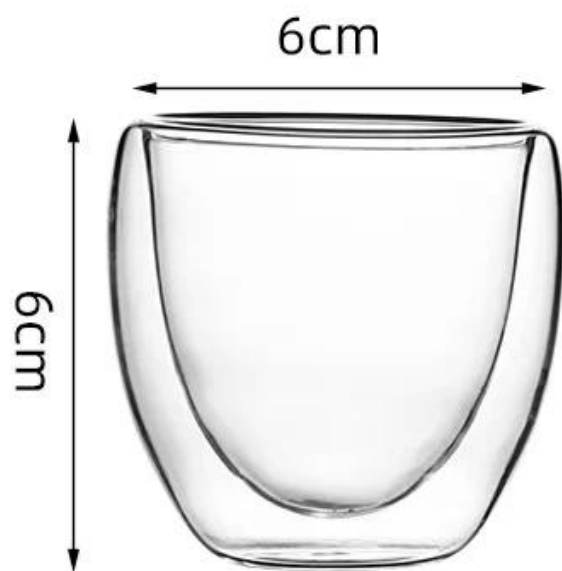
Category: Double wall glasses

Brand:RuixinGlass

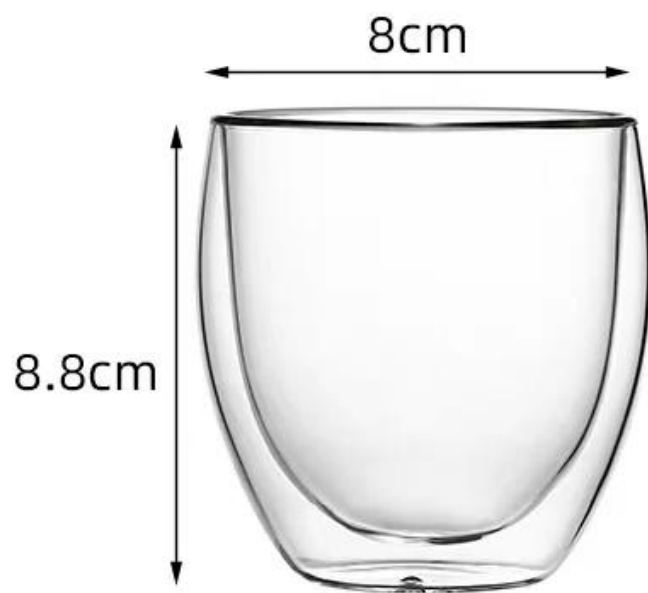
Item No:	RXSC2003
Material:	High borosilicate glass
Process:	Handmade
Could Pass:	Food test
Samples time:	1. 5~10 days if at exit shaped and size of glass. 2. 15~20 days if need new shape or size of glass.
Packing:	1. Normal packing,48pcs into export carton, Carton with cardboard divider; 2. Paper tray pallet packing; 3. Customized box.
Product capacity:	500,000~1,000,000 pcs per Month
Delivery time:	About 30-45days,but if you have a urgent need for the products, we can put your order into priority.

Payment terms:	Usually pay by T/T,Western Union,L/C or others according to your requirement.
Transportation:	By sea, by air, by express and your shipping agent is acceptable.
Product features:	<ol style="list-style-type: none"> <li>1. Food safe grade glass body. It doesn't contain BPA, lead, cadmium or any other harmful things to human body;</li> <li>2. It is freezer safe;</li> <li>3. The material is recyclable because it is totally mineral substance;</li> <li>4. It is environmental safe.</li> </ol>
For your choose:	<ol style="list-style-type: none"> <li>1. Any logo printing on the glass body.</li> <li>2. Any color painted, frost, electro plate ,pattern laser carver for the finish;</li> <li>3. Special package like shrink wrap, color gift box, white gift box etc;</li> <li>4. Open new mould for new glass and some accessories such as wood, plastic or metal as you like;</li> <li>5. Different size and shapes meet your needs.</li> </ol>

**Double wall glasses size ref.**



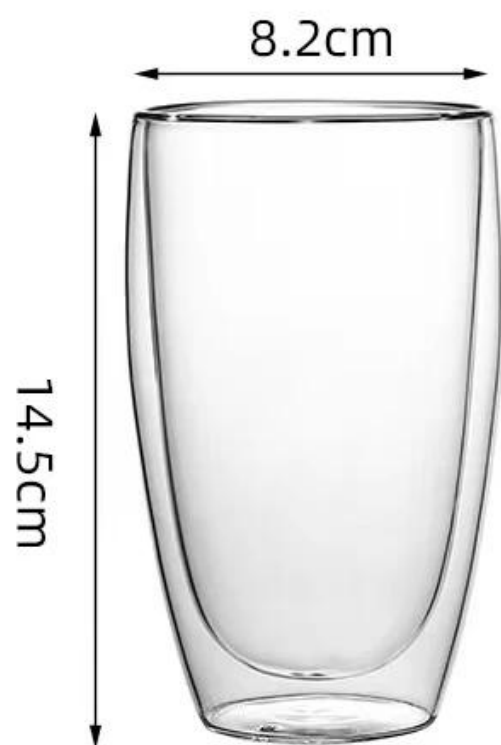
容量：80ml



容量：250ml



容量：380ml



容量:480ml



容量：250ml



容量:380ml





容量：480ml

**Our Certifications**



## Sedex Members Ethical Trade Audit (SMETA) Report

Version 5.0 Dec 2014, 2/4 Pillar Audit; replaces version 4.0 May 2012

Supplier name	Vendor LLC Shenzhen Representative office
Site country	China
Site name	Wanhai Weiming Craft & Art Co., Ltd.
Parent Company name (if the site)	Not applicable
SMETA Audit Type	<input checked="" type="checkbox"/> 2-Pillar <input type="checkbox"/> 4-Pillar
Date of Audit	17 December 2014

**Audit Content:**  
 (1) A SMETA audit was conducted which included some or all of Labour Standards, Health and Safety, Environment and Business ethics. The SMETA Best Practice Guidance version 5 December 2015 was applied. The scope of workers included all types of site staff, direct employees, agency workers, workers employed by service providers, and workers provided by other contractors. Any deviations from the SMETA Methodology are stated with reasons for deviation in the SMETA Declaration.

- (2) The audit scope was against the following reference documents:
- 2-Pillar SMETA Audit
    - ETI Base Code
    - SMETA Additions
      - Management systems and code implementation,
      - Commitment to Work & Immigration,
      - Sub-contracting and home-working.
  - 4-Pillar SMETA
    - 2-Pillar requirements (see above)
    - Additional Pillar assessment of Environment,
    - Additional Pillar assessment of Business Ethics
    - The new ETI Working Hours Clause
    - Now integrated into the latest SMETA version.

Where appropriate non-compliance was raised against the ETI code / SMETA Additions & local laws and recorded as non-compliance on both the audit report, CAPA and on Sedex.



## Alibaba.com Assessed Supplier



### Assessment Report

Presented to  
**Shenzhen Ruixin Glassware Co., Ltd.**  
 深圳市瑞信玻璃制品有限公司

Gold Supplier & Assessed Company Relationship:	<input type="checkbox"/> Self-owned <input type="checkbox"/> Wholly Owned <input type="checkbox"/> Shareholder/Partner <input type="checkbox"/> Kinship In-law Owners <input type="checkbox"/> Cooperation Partner
Company Address	Floor 5, No. 12, 3rd Row, Xinhua Industrial Park, Xinhua, Shahe, Tai'an, Shandong, Shandong, China
City / Country	Shenzhen, China
Company of Assessment	Alibaba
Gold Supplier Member ID	19288
Gold Supplier Company Name	Shenzhen Ruixin Glassware Co., Ltd.
Contact Person	Ms. Cindy Lee
Phone Number	8686-759-62621072
Fax Number	8686-759-62621071
Email	sales2@ruixinglassware.com
Website Address (URL)	http://ruixinglassware.alibaba.com

Service Provided by Bureau Veritas Certification Report No. 1904234



SGS is available to perform original tests on your goods.

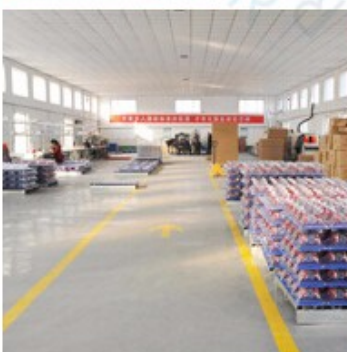


## Who are we?

Shenzhen Ruixin glassware company are a very professional glassware company, and have been in this field over 17years.We have our head office in Shenzhen, and have three factory, one is located in Shenzhen too,another two factory are in Shanxi,which are the biggest hand painting factory in China too.

Recently, Ruixin passed GSV and BSCI factory audit. Inspectors are very happy with our factory and praised that we are the most tidy and clean glass factory he visited.

Our company also celebrates our 10 years anniversary in 2015. In order for our factory to have a big development, we invested a series of machines, such as automatic spray machine, electroplated machine, etching and sandblasting machines.





For your choose & business partners



## Trade terms

### Payment:

1. Usually we accept payment by L/C, Paypal, Escrow, T/T and Western Union.
2. 30% deposit, 70% balance before shipment.

### About the shipment:

1. Shipping terms are depends on clients order quantity. We can use Express, LCL, FCL
2. Items will be shipped before careful checking,
3. We will update the delivery status timely after the goods are sent out.
- 4.

## Product packing



A. White paper



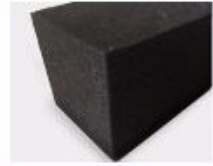
B. Corrugated paper



C. Bubble paper



D. EPE



E. EVA



F. Three layer  
Corrugated paper  
master carton



G. Five layer  
Corrugated paper  
master carton



H. Seven layer  
Corrugated paper  
master carton



I. Styrofoam



J. White Box



K. Color Box



L. Paper Sleeve



M. Pvc Box



N. Gift Box



R. Wooden Pallet

### FAQ:

#### **Q: Can you do printing on double wall glasses?**

A: Yes, we can. We could offer various printing ways: the screen printing, hot stamping, decal attachment, frosting, sandblasting, etc.

#### **Q: Can we get your free samples of double wall glasses?**

A: Yes, you can. Our Samples are only free for the customers who confirm order. But the freight for express is on buyer's account.

#### **Q: Can you combine many items assorted in one container in my first order?**

A: Yes, we can. But the quantity of each ordered item should reach our MOQ.

#### **Q: What is the normal lead time?**

For Stock products, we will send goods to you within 7-15 work days after we receive your payment.

For OEM products, the delivery time is 30-35 work days after we receive your payment.

#### **Q: Are you factory or trading company?**

A: We are export department in Shenzhen ,and we have a factory in Shan'xi,30000 square meters production area with around 300 workers

**Q: Can you accept a smaller order Quantity?**

A: Sure, If you just want to make a trial order less than our MOQ,we will try our best to provide you the lowest price for you with the diligent service and we hope we can build up a cooperative relationship.

**Q: What kind of package for beer can shaped glasses?**

A: We have inside packaging and outside carton, it is in a 5 ply carton.And we could do clients' customized box.

**Q: Do you have your own logistics provider?**

A Yes, now we have our own logistics provider by alibaba oncetouch, and some logistic companies in Shenzhen, but if have order requirement for provider, we can coordinate your arrangements.

**Q: How to get sample from your company?**

A: If you have a freight collected number such as DHL, UPS, TNT, we can give our sample for free. But if you want to make any design, the sample fees will be founded to you once you place an order with us at last.

**Q: Can you provide certificates for your products?**

A: Sure, we can provide our certificates for you.

**Q: What is your delivery date?**

A: Our delivery date is about 30-45days,but if you have a urgent need for the products, we can put your order into priority.

**Q: What is your payment term?**

A: We usually pay by T/T,Western Union,L/C or others according to your requirement.

**Q: Can you print our logo on the product?**

A: Yes,but the MOQ is 3000pcs to 5000pcs.

**How to contact us?**

Put your inquiry details in the **box below**, click "**Send**" now!

Or just contact me directly.

Attn: Sunny Wu

Tel: (86) 755 82821572

Email: [sales03@szrxglassware.com](mailto:sales03@szrxglassware.com)

Skype: [ruixingglassware3](https://www.skype.com/people/ruixingglassware3)