

In our new website Send Inquiry get a free sample

New website: www.glassware-suppliers.com



What are the functions of personalised champagne flute?

1. Machine blasted /pressed, elegant pattern, widely use in restaurant/hotel/home/party etc.
2. Special design and accurate quality control make sure every piece offered is as perfect as possible.
3. Logo customized, pattern, size and color etc. could be done according to your drawings.
Decal, Carving, electro plating, sand blasting, paint spraying, etc.
4. Packaging: PVC box, Windows box, color box, shrinkage wrap are available to make sure it be can
sold directly. Standard export packing assure safety shipment.
5. Timely delivery, 12000 square meter self-own warehouse holding large stock to enable our supply.
6. Eco-Friendly, pass FDA, CA65, LFGB standard test.

What are the specifications of personalised champagne flute?

Material: Glass

Category: Personalised champagne flute

Item No:	RXCG-Biao-0922
Material:	Glass
Process:	Handmade
Could Pass:	SGS, FDA, BV and LFGB test

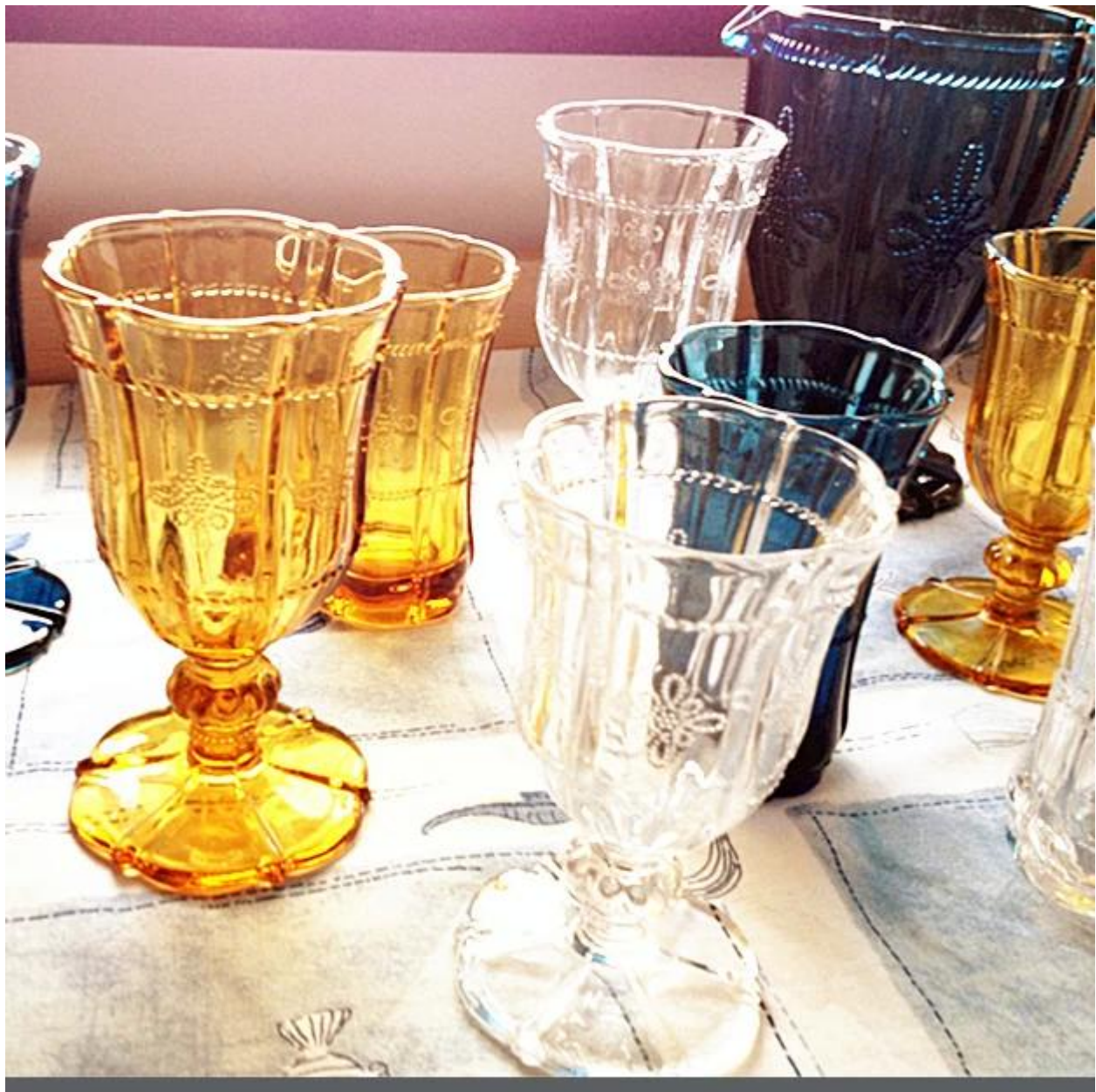
Samples time:	<ol style="list-style-type: none"> 1. 5~10 days if at exit shaped and size of glass. 2. 15~20 days if need new shape or size of glass.
Packing:	<ol style="list-style-type: none"> 1. Normal packing, 24 or 36pcs into export carton, Carton with cardboard divider; 2. Paper tray pallet packing; 3. Customized box.
Product capacity:	500,000~1,000,000 pcs per Month
Delivery time:	About 30-45days,but if you have a urgent need for the products, we can put your order into priority.
Payment terms:	Usually pay by T/T,Western Union,L/C or others according to your requirement.
Transportation:	By sea, by air, by express and your shipping agent is acceptable.
Product features:	<ol style="list-style-type: none"> 1. Food safe grade glass body. It doesn't contain BPA, lead, cadmium or any other harmful things to human body; 2. It is freezer safe; 3. The material is recyclable because it is totally mineral substance; 4. It is environmental safe.
For your choose:	<ol style="list-style-type: none"> 1. Any logo printing on the glass body. 2. Any color painted, frost, electro plate ,pattern laser carver for the finish; 3. Special package like shrink wrap, color gift box, white gift box etc: 4. Open new mould for new glass and some accessories such as wood, plastic or metal as you like; 5. Different size and shapes meet your needs.

Personalised champagne flute photos











Our certifications



Sedex Members Ethical Trade Audit (SMETA) Report

Version 5.0 Dec 2014, 2/4 Pillar Audit; replaces version 4.0 May 2012

Business Name	Vendor LLC Shenzhen Representative office
Site country	China
Site Name	Wahar Working Craft & Art Co., Ltd.
Parent Company name (if the site)	Not applicable
SMETA Audit Type	<input checked="" type="checkbox"/> 2-Pillar <input type="checkbox"/> 4-Pillar
Date of Audit	17 October 2014

Audit Content:
 (1) A SMETA audit was conducted which included some of all of Labour Standards, Health and Safety, Environment and Business ethics. The SMETA Best Practice Guidance version 5 December 2013 was applied. The scope of workers included all types of the site i.e. direct employees, agency workers, workers employed by service providers, and workers provided by other contractors. Any deviations from the SMETA Methodology are stated with reasons for deviation in the SMETA Declaration.

- (2) The audit scores were against the following reference documents:
- 2-Pillar SMETA Audit
 - ETS Base Code
 - SMETA Additions
 - Management systems and code implementation.
 - Commitment to Work & Immigration.
 - Sub-contracting and home-working.
 - 2-Pillar SMETA
 - 2-Pillar requirements (i.e. Additional 2-Pillar assessment of Environment, Sub-contracting and home-working).
 - Appraisal 2-Pillar assessment of Business Ethics.
 - The new ETS Working Hours Clause.
 - Now integrated into the latest SMETA version.

Where appropriate non-compliance was raised against the ETS code / SMETA Additions & local laws and recorded as non-compliance on both the audit report, CAPA and on below.



Alibaba.com Assessed Supplier



Assessment Report

Presented to
Shenzhen Ruixin Glassware Co., Ltd.
 深圳市瑞信玻璃制品有限公司

Gold Supplier & Assessed Company Relationship:	<input type="checkbox"/> Self-owned <input type="checkbox"/> Wholly Owned <input type="checkbox"/> Shareholder/Partner <input type="checkbox"/> Kinship Inherent Owners <input type="checkbox"/> Cooperation Partner
Company Address	Floor 5, No. 12, 3rd Row, Xinhua Industrial Park, Xinhua, Shunde, Taishan in Jiangmen, Guangdong, China
City / Country	Shenzhen, China
Company of Assessment	Alibaba
Gold Supplier Member ID	19288
Gold Supplier Company Name	Shenzhen Ruixin Glassware Co., Ltd.
Contact Person	Ms. Carol Lam
Phone Number	8686-769-62621072
Fax Number	8686-769-62621071
Email	sales2@alibaba.com
Website Address (URL)	http://ruixinglassware.en.alibaba.com

Service Provided by Bureau Veritas Certification
 Report No.: 060224



SGS Reference: 12168010 CHEM
 17 April 2014



Who are we?

✘
Ruixin Glass company also celebrates our 10 years anniversary in 2015.
In order for our factory to have a big development,
we invested a series of machines, such as automatic spray machine, electroplated machine,
etching and sandblasting machines.



For your choose

- 1.Any logo printing on the glass body.
- 2.Any color painted, frost, electro plate ,pattern laser carver for the finish;
- 3.Special package like shrink wrap, color gift box, white gift box etc:

4.Open new mould for new glass and some accessories such as wood,plastic or metal as you like;

5.Different size and shapes meet your needs.

Trade terms

Payment:

Usually we accept payment by L/C,Paypal,Escrow,T/T and Western Union.

30% deposit, 70% balance before shipment.

About the shipment:

Shipping terms are depends on clients order quantity.We can use Express,LCL,FCL

Items will be shipped before careful checking,

We will update the delivery status timely after the goods are sent out.

Product packing



A. White paper



B. Corrugated paper



C. Bubble paper



D. EPE



E. EVA



F. Three layer
Corrugated paper
master carton



G. Five layer
Corrugated paper
master carton



H. Seven layer
Corrugated paper
master carton



I. Styrofoam



J. White Box



K. Color Box



L. Paper Sleeve



M. Pvc Box



N. Gift Box



R. Wooden Pallet



Our Decorative craft:

We offer glassware with customised printing to promote your product or brand.

Decorative craft more information: [Home>>Decorative_craft.html](#) 

Promotional drinkware, such as a custom logo on our wine glass or a colour logo on our beer glass will promote brand awareness at venues and functions.

Capture the attention of your customers whilst they drink your beverage from glassware featuring your brand at product launches.

Minimum order quantities apply. Contact us to find out more information.



New website: www.glassware-suppliers.com

FAQ:

Q: Can we get your free samples personalised champagne flute?

A: Yes, you can. Our Samples are only free for the customers who confirm order. But the freight for express is on buyer's account.

Q: Can you accept a smaller order quantity?

A: Sure, If you just want to make a trial order less than our MOQ,we will try our best to provide you the lowest price for you with the diligent service and we hope we can build up a cooperative relationship.

Q: What kind of package for personalised champagne flute?

A: We have inside packaging and outside carton, it is in a 5 ply carton.And we could do clients' customized box.

Q: How to get sample from your company?

A: If you have a freight collected number such as DHL, UPS, TNT, we can give our sample for free. But if you want to make any design, the sample fees will be founded to you once you place an order with us at last.

Q: Can you provide certificates for your products?

A: Sure, we can provide our certificates for you, such as BV,FDA,LFGB,ASTM,Dishwasher test and so on.

Q: Can you print our logo on product?

A: Yes,but the MOQ is 1000pcs to 5000pcs.

How to contact us?

Put your inquiry details in the **box below**, click "**Send**" now!